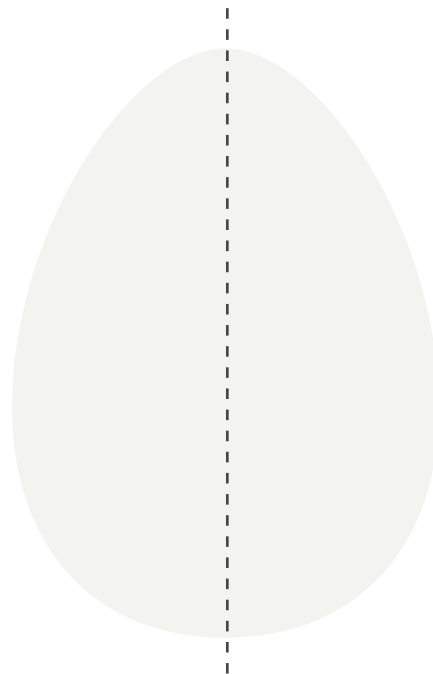
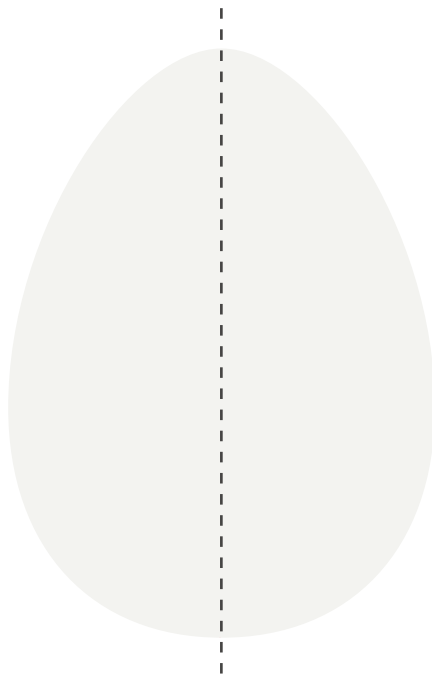


SYMMETRICAL EGGS

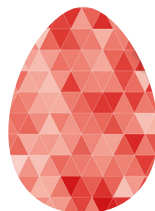
TASK 1

The Easter bunny is missing a few eggs which have lines of symmetry in their patterns, can you design some of your own?



TASK 2

Can you circle all of the eggs with tessellating patterns?



HANDY HINT

Tessellate definition

To cover a surface with repeated use of a single shape, without gaps or overlapping.