

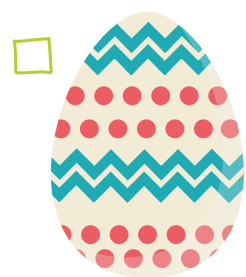
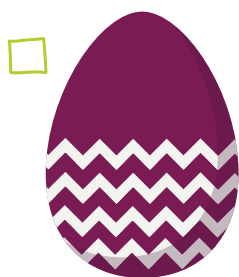
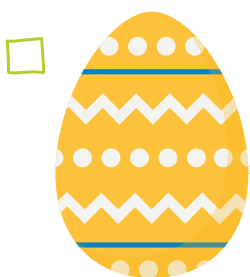
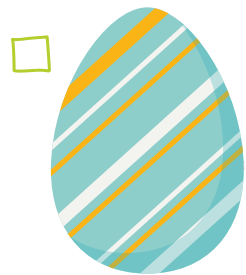
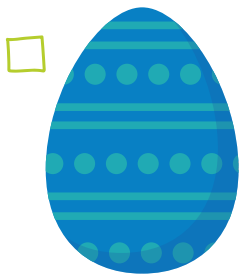
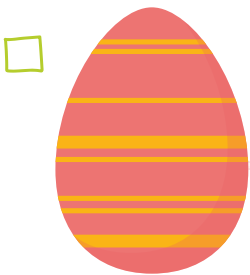
EASTER ACTIVITY



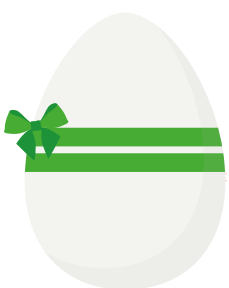
HELP!

The Easter bunny has been asked to collect the right eggs to deliver to some hungry mathematicians. Use your maths vocabulary skills to help him pick the eggs from the clues.

1 Tick only the eggs which are decorated with parallel lines



2 Which of the coloured ribbons are perpendicular?



ANSWER

3 Which coloured line is the line of symmetry on this eggs?



HANDY HINT

Something is symmetrical when it is the same on both sides. Use a small mirror and place it on the lines to check your answer!